

Thermal Receipt Printer



a Better Solution  
for your Business™

## Dual-Interface and High-Performance **SRP-350plus**

### SRP-350plus Highlights

- **On board USB 2.0 Standard**
  - Data cable included
- **High speed USB 2.0**
- **Fast printing speed of up to 200mm per second**
  - Optimized mechanical components and software to enable fast and stable printing
  - Improved CPU (32 Bit),
  - Larger memory capacity(4Kbytes)
  - Two color printing
- **Long lasting auto-cutter up to 1.8 million cuts with easy paper-jam removal**
- **Easy paper loading**
- **Customer oriented software tools**
  - Firmware download
  - Virtual Memory Switch Manager (VMSM)
  - NV image download
- **2D barcode printing supported**
  - PDF417
  - QR Code
- **Two different models**
  - SRP-350plusC (with auto-cutter)
  - SRP-350plusA (without auto-cutter)

**BIXOLON®**



# SRP-350plus

Dual-Interface and High-Performance

With improved functions and specifications, the SRP-350plus is a leap forward in technology representing BIXOLON's commitment to supply the best and the right product for our customers and our partners.

## PRODUCT FEATURES AND SPECIFICATIONS

### Fast printing of text and images

To speed up customer transactions without sacrificing performance, the SRP-350plus prints texts and graphics at a consistent speed of 200mm per second which is amazingly 30% faster than the industry leading the SRP-350. The SRP-350plus guarantees smooth and speedy printing without any interruptions during printing.

### High-speed on board USB 2.0 standard

The SRP-350plus has USB 2.0 interface on the main board as a standard and has an additional interface slot for an optional Serial, Parallel or Ethernet interface card. New POS systems are starting to be equipped with USB 2.0 but most thermal printers in the market only support version 1.1 of USB whose full speed is 12 Mbps. BIXOLON SRP-350plus now supports the new USB 2.0 standard with a High Speed of 480 Mbps. The USB 2.0 interface of the SRP-350plus has download compatibility for USB1.1.



USB 2.0 on board

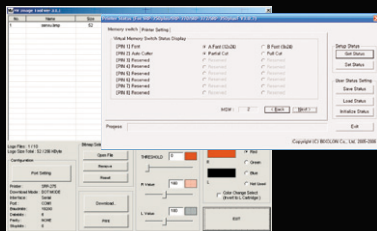
### Longer lasting auto-cutter



The new auto cutter of the SRP-350plus has long lifespan up to 1.8 million cuts. It has specially designed components such as gears, cutting blade and covers to guarantee its lifetime. In addition, it also has a manual wheel conveniently positioned for easy clearing of the paper jam.

### User friendly software tools

The new customer oriented utilities enable the users to directly access logo download (NV Image Tool), code page selection (Virtual Memory Switch Manager), firmware download and the other printer settings more easily and with No Hardware setting changes.



### Two different models

- SRP-350plusC (with auto-cutter) • SRP-350plusA (without auto-cutter)

### PRINT

- PRINTING METHOD : Direct thermal
- PRINTING SPEED : 200mm/sec (SRP-352plus: 195mm/sec)
- RESOLUTION : standard : 180dpi(7dot/mm)  
optional(SRP-352plus) : 203dpi(8dot/mm)
- CHARACTER SIZE : Font A: 12 X 24 / Font B: 9 X 24  
Korean: 24 X 24 / Chinese: 24 X 24
- CHARACTERS PER LINE  
SRP-350plus - Font A : 42 / Font B : 56, Korean : 21 / Chinese : 21  
SRP-352plus - Font A : 48 / Font B : 64, Korean : 24 / Chinese : 24
- CHARACTER SET : Alphanumeric Character : 95  
Extended Character : 128 X 34 pages  
International Character : 32
- BARCODES  
1D : EAN-13, EAN-8, Code 39, Code 93, Code 128, ITF, Coda Bar, UPC-A, UPC-E  
2D : PDF417, QR Code

### PAPER

- WIDTH : 80mm
- PAPER ROLL DIAMETER : Max Ø 83mm
- PAPER LOADING : Easy Paper Loading

### RELIABILITY

- PRINTER UNIT : 70 million lines
- TPH : 150 Km
- AUTO CUTTER : 1.8 million cuts

**INTERFACE** : USB 2.0 on board / Serial(RS-232C) / Parallel (IEEE 1284) / Ethernet / Powered USB

**RECEIVE BUFFER** : 4 Kbytes

**NV IMAGE MEMORY** : 256 Kbytes (Mono / Color)

**USER DEFINE BUFFER** : 12 Kbytes

**EMULATION** : ESC/POS™

**DRIVER** : Windows, OPOS, JPOS, Linux CUPS (Linux kernel 2.4.18 and later),  
Module Driver (Linux kernel 2.4.18 and later)

**SENSOR** : Paper Near End Sensor, Paper End Sensor, Cover Open Sensor

**DRAWER PORT** : 2 ports

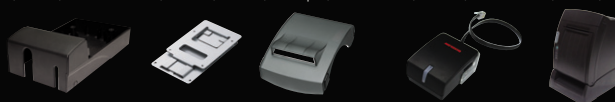
**POWER SUPPLY (SMPS)** : AC 100~240V / DC 24V, 2.5A

**DIMENSIONS** : 145 X 195 X 146 (W X L X H mm)

**OPERATING TEMPERATURE** : 0 ~ 45°C

### OPTION

- SMPS BUILT-IN COVER (RSB-350)
- WALL MOUNT (RWM-350)
- SPLASH PROOF COVER (RSC-350plus)
- RECEIPT MELODIST (RMB-100)
- VERTICAL STAND (RVS-350)



**BIXOLON®** www.bixolon.com

This publication contains product descriptions without obligation.  
All features and specifications are subject to change without notice. January 2010

#### BIXOLON Headquarters

Address #A-5F, Digital Empire Building, 980-3,  
Yeongtong-dong, Yeongtong-gu, Suwon-si,  
Gyeonggi-do, 443-702, Korea  
Tel +82 (0) 31 218 5500 Fax +82 (0) 31 218 5589  
E-mail sales@bixolon.com

#### BIXOLON America Inc.

Address 3171 Fujita St Torrance,  
CA 90505  
Tel +1 858 764 4580 Fax +1 310 257 6869  
E-mail sales@bixolonusa.com

#### BIXOLON Europe GmbH

Address Tiefenbroicher Weg 35,  
40472 Düsseldorf  
Tel +49 (0) 211 68 78 54 0 Fax +49 (0) 211 68 78 54 20  
E-mail sales@bixolon.de

#### BIXOLON Dongguan

Address #5 Luyi 2 Road, Tangxia Town,  
Dongguan City, Guangdong Province, P.R.China  
Tel +86 769 8262 0704 Fax +86 769 8262 0703  
E-mail sales@bixolon.com